







Maidstone Rural West (South)

-  District Wards
-  Main Rivers
-  High
-  Medium
-  Low
-  Very Low

NaFRA:

National Flood Risk Assessment (NaFRA) is a national assessment of flood risk across England and Wales which shows the likelihood of flooding in any year from rivers and the sea. It considers the location, type and condition of defences, mapped on a 50m x 50m grid in four probability bandings:

High – At risk from an event with an AEP of 3.3% or greater

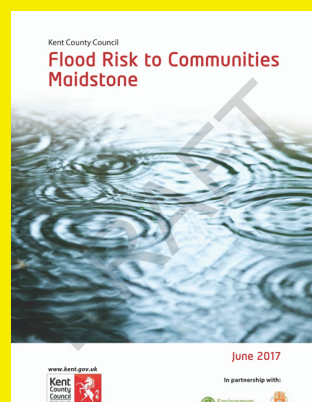
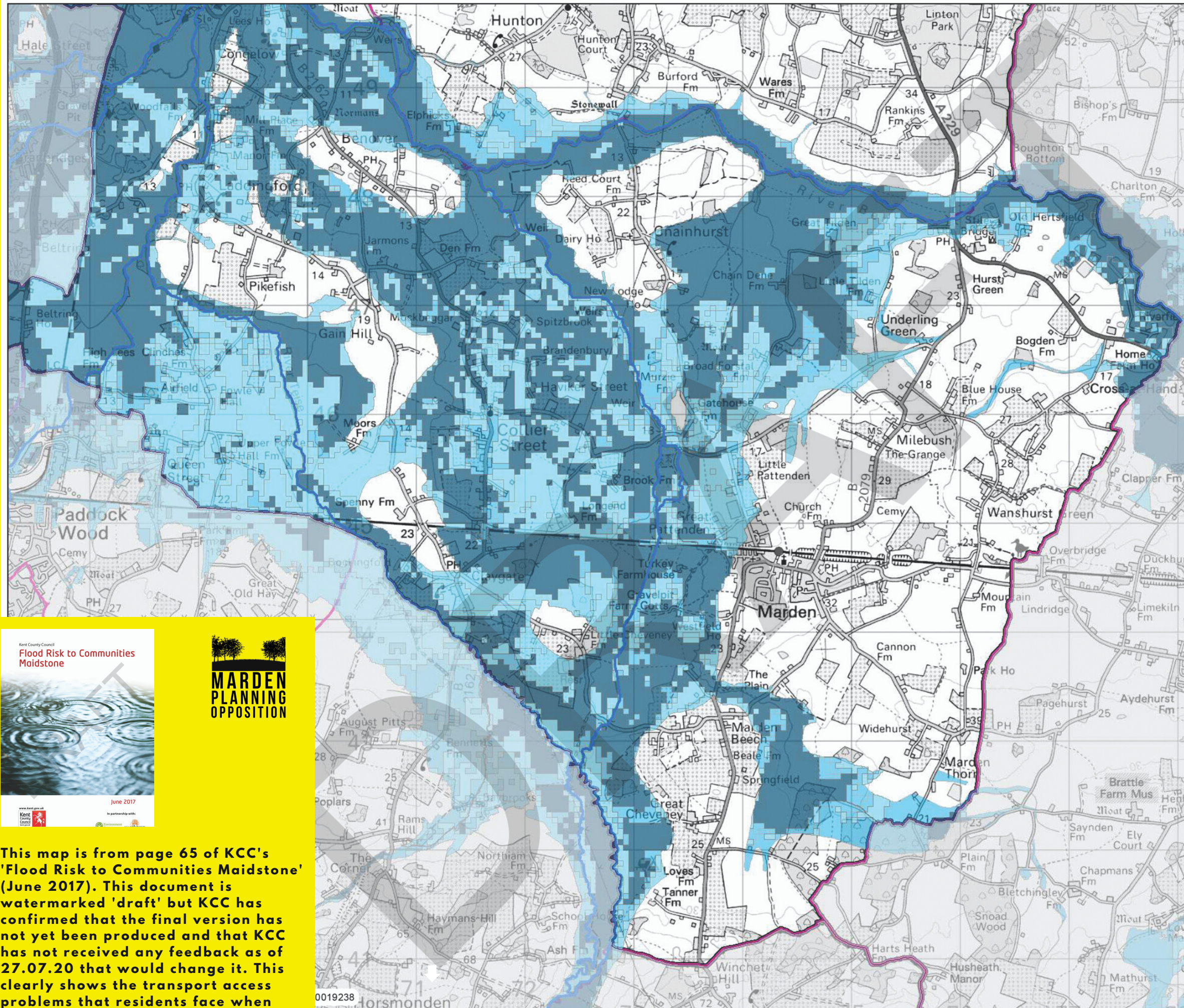
Medium – At risk from an event with an AEP of less than 3.33% AEP but greater than or equal to 1%

Low - At risk from an event with an AEP of less than 1% AEP but greater than or equal to 0.1%

Very Low – At risk from events with an AEP of less than 0.1%



Caveats:
Properties at risk have been defined using the National Flood Risk Assessment data (NaFRA), which calculates the likelihood of flooding from rivers or the sea. The assessment takes into account the type, location and condition of flood defences, and the chance of these defences overtopping or failing during a flood event. This data is DRAFT, and subject to further checks to verify the information. This should be used as a guide only.



This map is from page 65 of KCC's 'Flood Risk to Communities Maidstone' (June 2017). This document is watermarked 'draft' but KCC has confirmed that the final version has not yet been produced and that KCC has not received any feedback as of 27.07.20 that would change it. This clearly shows the transport access problems that residents face when flooding occurs in and around Marden.